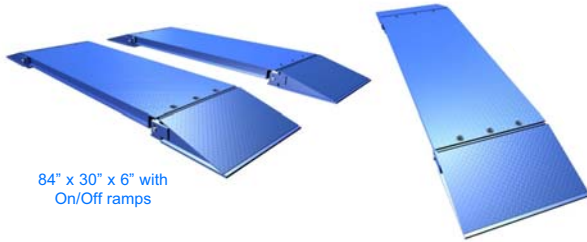
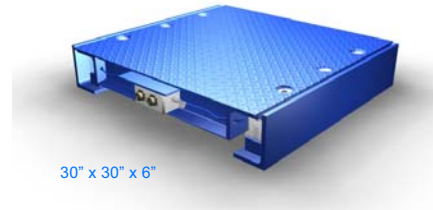




ML Axle Weighing Scales



84" x 30" x 6" with On/Off ramps



30" x 30" x 6"

If high accuracy, dependable axle weighing is what your looking for, look no further than Massloads Axle Weighing Scales. This scale can be used as an above ground, or pit installed axle scale depending on your application. It uses our tried and true ML1100 double-ended shearbeam loadcell that is environmentally sealed. You can be assured of accurate and reliable weighing in temperatures from -40degC to +57degC.

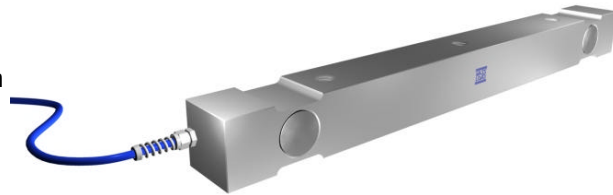
Low Maintenance & Built To Last

Massload axle scales are fully electronic. There are no moving parts to wear out or adjust. Weight is measured using our precision machined, high strength load cells located within the platforms. They are environmentally sealed and virtually indestructible, ensuring years of trouble free operation. The platforms are constructed of heavy-duty structural steel to stand up to heavy, repeated use.

Be assured of reliable, worry free weighing with these quality weighpads.

Features:

- Low Profile (6")
- Durable, no slip checker plate decking.
- Heavy duty high strength steel construction.
- Your choice of finish.



Models Available:

- 30" x 30" x 6" active weighing surface, 30,000lb capacity per pad.
- 84" x 30" x 6" active weighing surface, 30,000lb capacity per pad.
- 144" x 30" x 6" active weighing surface, 40,000lb capacity per pad.

On/Off ramps are optional.

ML1100 Loadcell Specifications:

Capacity25,000 lb (dynamic load)
75,000 lb (static load)
Full Scale Output1mv/V @ 25,000 lbs.
Maximum Excitation15 VDC
Non-Linearity	<.03% FS
Hysteresis	<.02% FS
Non-Repeatability	<.01% FS
Thermal Sensitivity Shift0.0008% of reading/°F
Thermal Zero Shift0.0015% FS/°F
Barometric EffectNIL
Bridge Resistance700 ohms
Operating Temp Range-50°C to +57°C