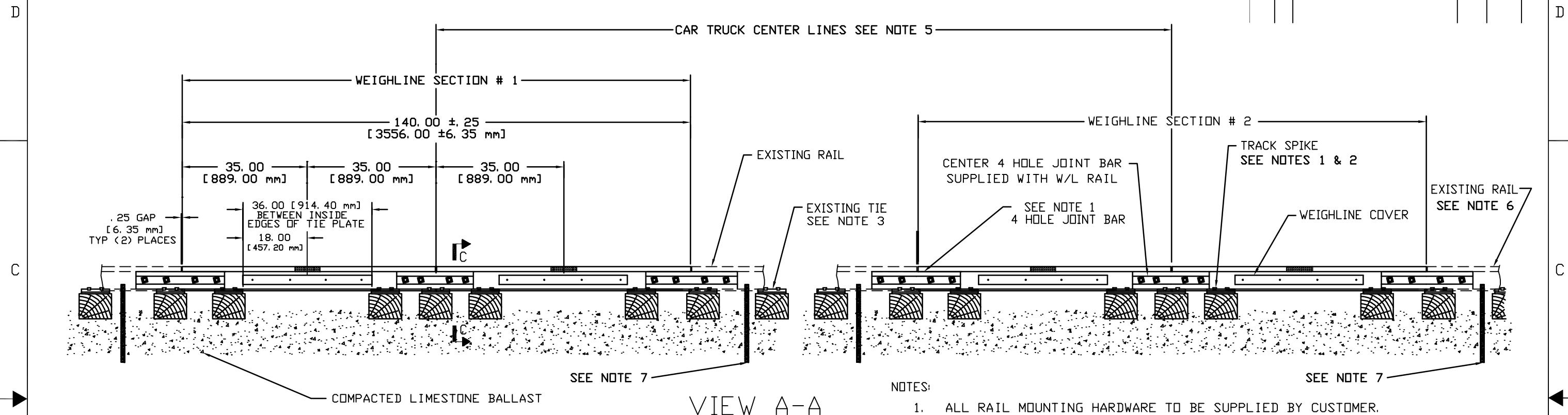


8 7 6 5 4 3 2 1

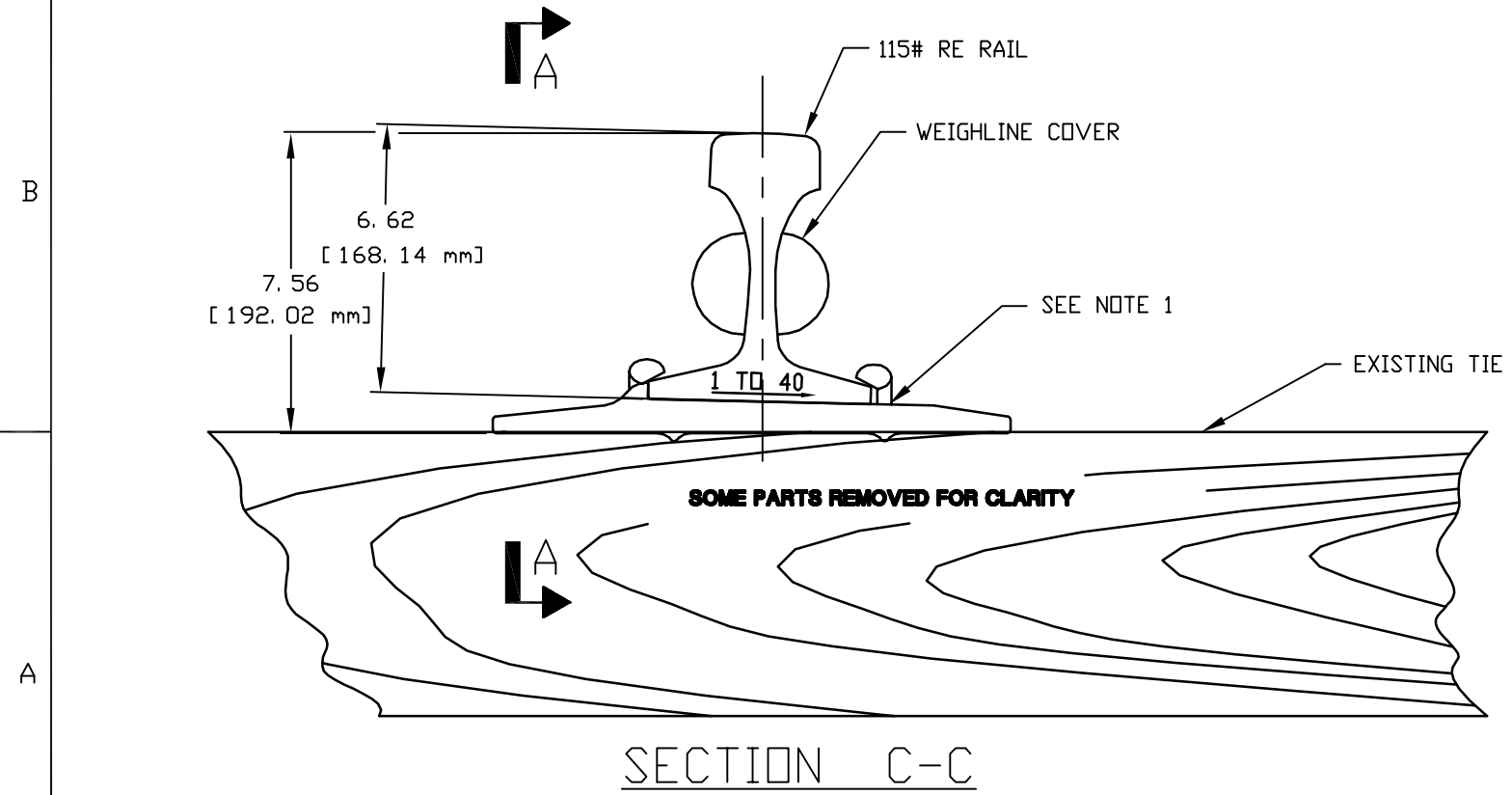
REVISIONS					
ZONE	LTR	DESCRIPTION	BY	DATE	APPR



VIEW A-A

- NOTES:
1. ALL RAIL MOUNTING HARDWARE TO BE SUPPLIED BY CUSTOMER.
 2. AVOID HITTING WEIGHLINE COVER, WHEN INSTALLING SPIKES, OR DAMAGE MAY RESULT.
 3. ADDITIONAL TIES TO BE ADDED UNDER THE JOINT BAR LOCATIONS, TRACK IN THE WEIGHLINE AREA AND FOR 50' EITHER SIDE MUST BE TO MAINLINE STANDARDS.
 4. WEIGHLINE RAIL CENTER TO CENTER DISTANCE IS TO BE EQUAL TO CAR TRUCK CENTER TO CENTER DISTANCE.
 5. ALL TIES FOR 25' EITHER SIDE OF WEIGHLINE SECTIONS AND THROUGHOUT THE WEIGHLINE AREA TO BE BOX ANCHORED USING DRIVE-ON, ANTI-CREEP ANCHORS.
 6. RAILS EITHER SIDE OF WEIGHLINE SECTIONS SHOULD BE CONNECTED TO AN EFFECTIVE GROUND. (REFER TO INSTALLATION GUIDE A29569-0010).

DIMENSIONS IN BRACKETS [xxx] ARE MILLIMETERS



SECTION C-C

P/N D47014-0013

QUANTITY PER DASH NO.	ITEM NO.	STYLE	PART NO.	DESCRIPTION	REF. DESIG.
BILL OF MATERIALS					
UNLESS OTHERWISE SPECIFIED DIMENSIONS ARE IN INCHES (XXX) DENOTES REFERENCE DATA / [mm] DENOTES METRIC DIMENSIONS					
2 PLACE DECIMALS ± - 3 PLACE DECIMALS ± - ANGLES ± -					
APPROVALS: SIGNATURE & DATE DRAWN: JON OWEN 1 NOV 1993					
MECH. ENG. JACK CALDICOTT ELECT. ENG.					
FINISH: NOT APPLICABLE					
MATERIAL: NOT APPLICABLE					
MACHINING DRAWINGS: REMOVE ALL BURRS AND SHARP EDGES					
MACHINED SURFACE FINISH UNLESS OTHERWISE INDICATED					
SCALE: 1=13 DCN 3240 SHEET -					

WEIGH-TRONIX
FAIRMONT, MN 56031, U.S.A.

WLS-FD-115 RE
GENERAL ARRANGEMENT
STATIC FULL DRAFT

SIZE: D
DRAWING NO.: 47014

8 7 6 5 4 3 2 1