



# WeighMaster PC Railcar Weighing Software

Advanced Weigh Technologies, Inc. /500 W Donovan / Houston, Tx 77091 / Tel:(713) 691-4878/ Fax: (713) 694-4013

## DESCRIPTION

Systems Associates designed the **WeighMaster Railcar Weighing Software** to be a companion for the Model 7430 In-Motion and Model 5230 Static Railcar Weighing Systems. The software package, intended for use at the scale location, includes features needed by the scale operators for entering and storing weight data.

This system will operate on a standard PC computer and provide the required operator interface. Where required, data can be transferred to a data collection site at your office for additional processing. Files are stored locally to prevent data loss and to allow recall of stored information.

**RAILCAR WEIGHT RECORDS** - As railcars are weighed, the data including weight, time and date, car identification (when available), and status messages are automatically stored in WeighMaster's weight data base. Though data files can be stored and processed without the intervention of an operator or trainman, this software was designed as the operator interface to the weighing system. It allows for collection, manual entry, manual correction, storage, and printing of critical information required for weight processing. The information created in the WeighMaster software provides the input to your car tracking and billing systems.

A car number for each car weighed is the key to further processing. The car number, if not obtained from an identification system, must be entered by the operator. Tare weights, when required, may be entered from stenciled information on the railcar or automatically recalled from stored data. Other data entered into the WeighMaster software's weight data base provide product and railcar movement information about each car weighed. The system uses the collected information to produce a report of cars weighed. The reporting can include gross, tare, and net weight along with heel and heavy weight warnings.

**SYSTEM DIAGNOSTICS** - Trouble within the weighing system can often be detected and corrected by simply knowing what is stored in the scales memory.

The scale diagnostics allows the technician to access this data for analyzing system faults. Calibration faults, zero errors, and system errors are a few examples of data that are available.

**TARE WEIGHT STORAGE** - A common practice for determining the product weight in railcars is to subtract the empty railcar weight, or tare weight, from the full or gross weight of the car. Systems Associates has incorporated the UMLER (Universal Machine Language Equipment Record) file of stored tare weights as the tare weight source to determine the net weight of the product in the railcar. This feature may be disabled if an actual weighment of the empty railcar is desired.

**VIEWING FILES** - The data stored in the system may be reviewed using the Site Monitor data view screen. Data from any stored file can be retrieved into the Site Monitor screen for viewing, searching, and printing utilities.

**AUTOMATIC FILE TRANSFER** - Whether operator initiated, or based on automatic system parameters, the transfer of data from the scale site to the operations center is as important as actually weighing the traffic. Timely, accurate, and reliable weight data is the key to an efficient operation.

# WeighMaster - PC Railcar Weighing Software

## Database Printout

Database Printout Systems Associates Inc.								
Seq	Car	Number	Gross	Tare	Net	Status	Time	Date
1	SAIX	58763	252300	58700	193600	LB	10:18:58	08-21-2002
2	SAIX	60235	259400	51400	208000	LB	10:20:16	08-21-2002
3	SAIX	71592	256600	54800	201800	LB	10:21:01	08-21-2002
4	SAIX	409901	257600	59700	197900	LB	10:21:43	08-21-2002
5	SAIX	502	249900	57000	192900	LB	10:22:17	08-21-2002
6	SAIX	299038	264500	67600	196900	LB	10:23:57	08-21-2002
7	SAIX	140793	210700	61100	149600	LB	10:24:44	08-21-2002
8	SAIX	20688	236200	63300	172900	LB	10:25:46	08-21-2002
9	SAIX	903661	269500	64600	204900	HEAVY	10:26:16	08-21-2002
10	SAIX	110955	250500	59900	190600	LB	10:26:55	08-21-2002

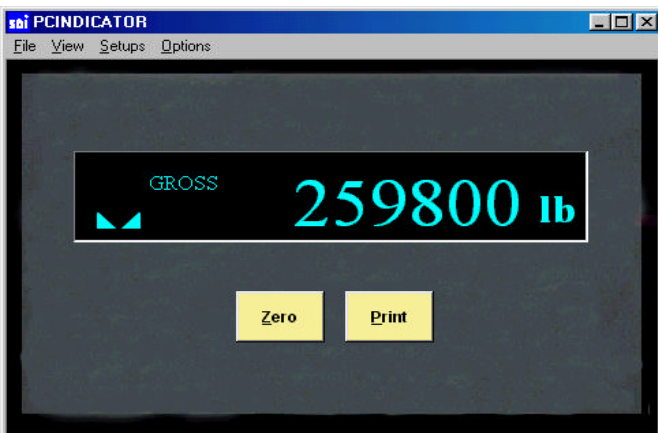
**Total Gross Weight : 2507200 lb**  
**Total Tare Weight : 598100 lb**  
**Total Net Weight : 1909100 lb**  
**Tons Average : 95.46**

## FEATURES

- Compatible with all Systems Associates Railcar weighing products (coupled in motion, un-coupled in motion, static, and DDE interface to 530 virtual indicator).
- UMLER (Universal Machine Language Equipment Record) tare weight file. All tare weights in North American fleet stored. *\*Must be updated yearly.*
- All weighing sessions stored as files on the local computer. Files may also be stored on any network drive. Selectable file formats that can be used in many spreadsheet/database programs.
- Real time scale diagnostics. Diagnostic information is stored in the scale instrument and is accessed through the WeighMaster software package.
- User selectable database fields. (Product, tons, etc.)

## SYSTEM REQUIREMENTS

- IBM compatible processor operating at 90MHz or higher (a 166 MHz processor or higher is recommended)
- 16 MB of RAM
- 50 MB available disk space on the local hard drive
- CD-ROM drive
- Microsoft Windows 95, 98, 2000,XP or NT 4.0 or greater
- SVGA or higher resolution monitor
- 56K modem (optional for dial in diagnostics and train data dial out)
- To print reports, any Windows compatible printer



**530 Virtual Indicator** The 530 virtual indicator (530vi) PC software package communicates directly with digital load cells. The 530vi PC software program interfaces directly with WeighMaster.

Specifications subject to change without notice  
DS-64-0902

Printed in U.S.A.

© 2002 Systems Associates, Inc.